



**LASERGEAR**

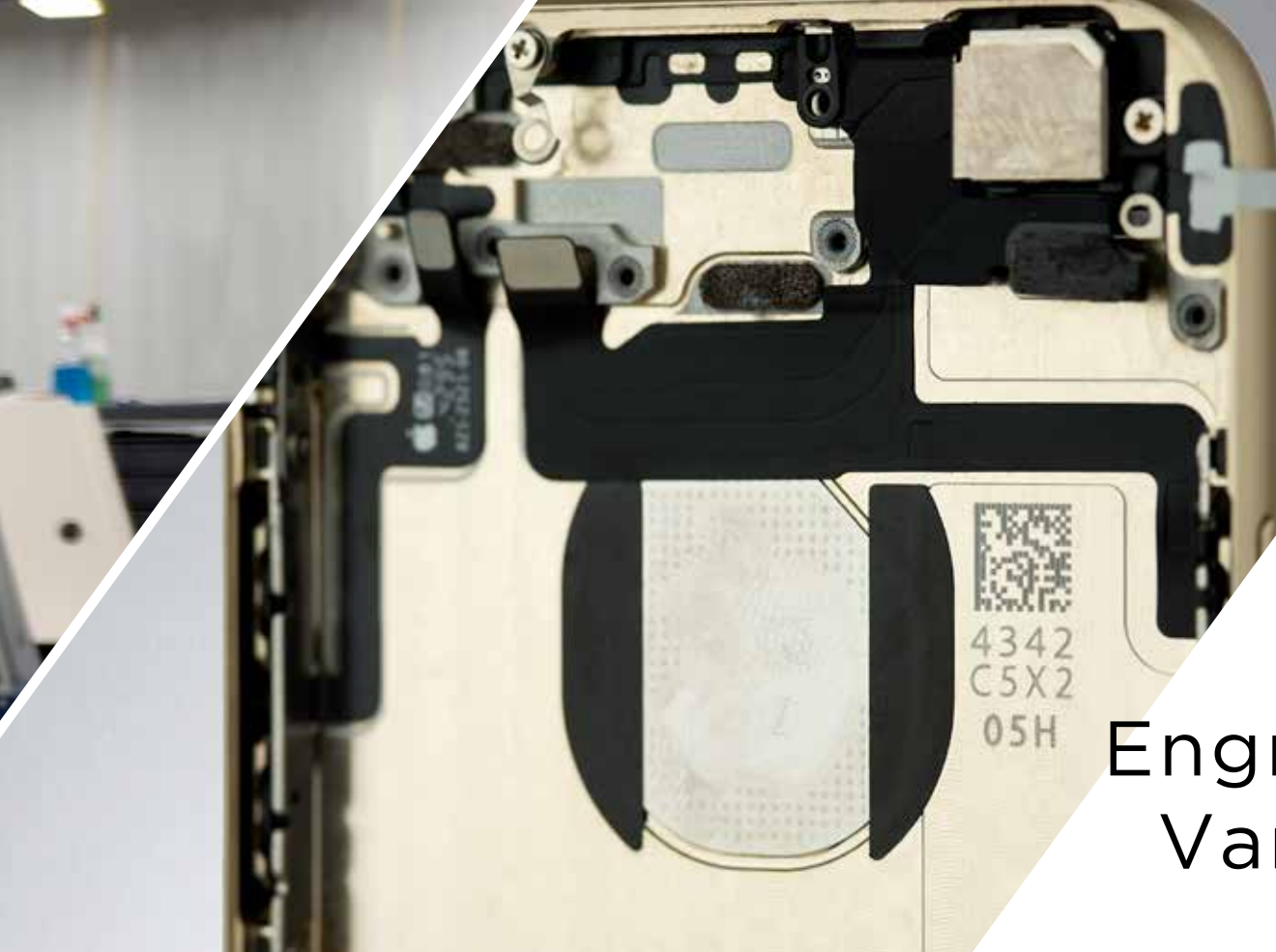


# ABOUT LASERGEAR

## Entry-Level Laser Marking Systems Manufactured in the USA

LaserGear is a full featured, entry-level line of laser marking products from TYKMA ElectroX, a world leader in industrial laser systems. LaserGear was created to serve clients who desire an entry-level laser marking system without compromising on quality. LaserGear products are manufactured in Chillicothe, OH, USA, using high quality components and are backed by an 18-month warranty with an industry leading complete replacement policy. If your system is down within the warranty period, simply contact LaserGear and we will replace it with a new unit.





Laser Mark,  
Engrave, and Etch a  
Variety of Materials



## APPLICATIONS

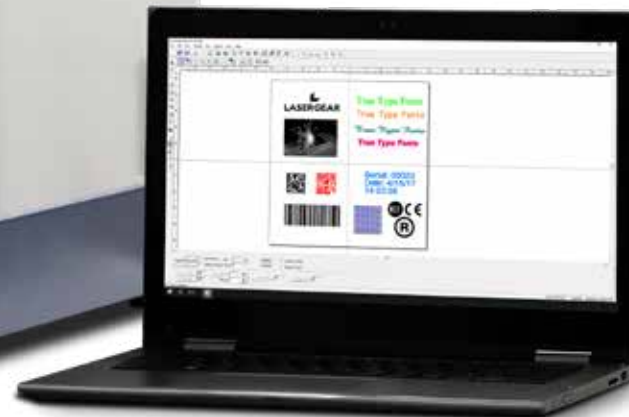
LaserGear systems mark all metals, most plastics, carbide, anodized aluminum, painted/coated materials, and more. Powerful MOPA fiber laser technology enhances the marking capabilities and reliability over basic q-switched fiber laser systems.



# LASERGEAR BOQX

## **A Powerful Class I Benchtop Laser Marking System**

LaserGear BOQX is a Class 1 benchtop laser marking system that combines simplicity with power. Featuring a 20W MOPA fiber laser, BOQX delivers both strength and speed to accomplish a variety of applications. A front sliding vertical door and power focal height adjustment with a built-in focus finder tool allow for simple front loading and part setup. Simply connect a laptop or desktop PC via USB and begin programming in our Minilase Pro SE software.



## Features:

- Class I safe benchtop laser enclosure
- Front operator control buttons
- Front sliding vertical door
- 20W MOPA fiber laser
- Power focal height adjustment with focus finder tool



# Powerful Benchtop Laser Marking

# LASERGEAR QUBE

## Ideal for Class IV Tool Post Use or Integration Applications

LaserGear QUBE is a Class 4 laser marking system that is ideal for use in an open environment or integrated into production lines. Featuring a 20W MOPA fiber laser, QUBE delivers both strength and speed to accomplish a variety of applications. Mount QUBE to a tool-post for marking applications which require open space and flexibility. Integrate QUBE into automated lines for unattended or turnkey applications. Connect a laptop or desktop PC via USB and begin programming in our Minilase Pro SE software.



### Features:

- Class IV integration laser marking system
- Compact head design and controls enclosure
- 20W MOPA fiber laser
- I/O for automated system control



# Benchtop or Integration Laser Marking

## LASERGEAR **QUBE 60**

### **QUBE60 Features More Power**

QUBE60 adds more power and selectable pulse durations for advanced marking capability, with improvements to speed, flexibility, and deep engraving.

Includes all the features of the QUBE with the additions of:

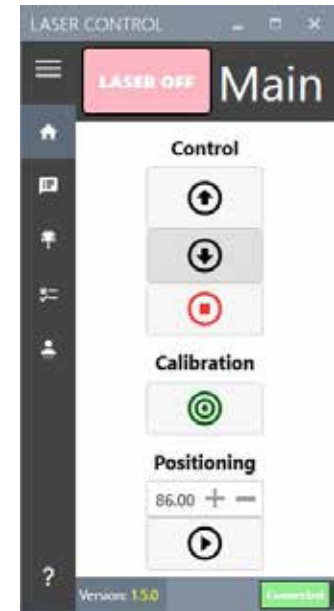
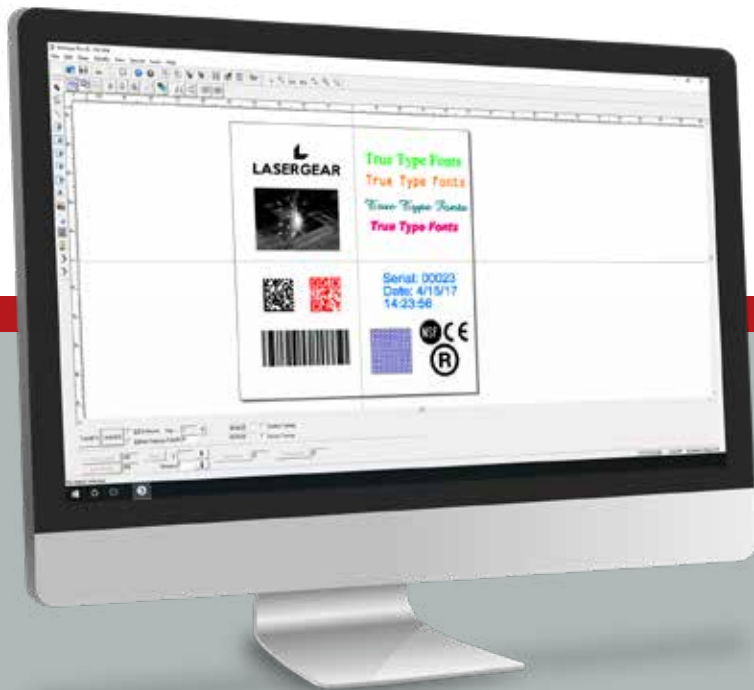
- 60W MOPA Fiber Laser
- 8 Selectable Pulse Durations

# SOFTWARE

## LaserGear Marking Software

With our user-friendly software, operators and engineers can quickly create marking files with text, barcodes, 2D codes, and a variety of graphic formats such as DXF, AI, PLT, BMP, and JPEG. CAD tools allow users to draw their own graphics and manipulate complex vector files.

Automated date coding and serialization capabilities are also included. A pre-configured materials library takes the guess work out of setting up laser marking parameters. Control a rotary device for 360° marking.



## Laser Control Center

Advanced machine control is included with our LaserGear BOXX Laser Control software module. Control and change the machine z-axis height, view activity logs, and more using your laser programming PC.



# ACCESSORIES



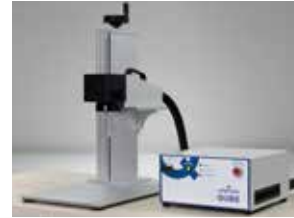
## MR65 Rotary

The MR65 is a robust, compact rotary axis ideal for 360° radial laser marking. The unit features a manual three jaw holding chuck along with multi-diameter fingers for holding the ID or OD of components. A tilting feature enables marking on complex angles or inner diameters.



## Handheld Control Pendant

The handheld control pendant is available for all LaserGear products and features advanced system control such as: Start/ Stop Marking, Shutter Control, Laser On/ Off Status, Busy Status, Cycle Complete Alert, Z Axis Control (BOQX), Laser Temperature and Serial Information, and Warnings and Error Messages.



## Tool Post

Our manual tool post allows provides secure mounting and focal height adjustment for the LaserGear QUBE product. A baseplate with through holes allows for fixture mounting and part presentation.



## Fume Extraction

A variety of fume extractor products are available to remove harmful dust, debris, and fumes created by the marking process.



## Laser Safety Glasses

For safety in Class IV operation.



# TECHNICAL SPECIFICATIONS

## BOOX

<b>System Dimensions / Weight (approx.)</b>	16.15"W x 34.5"L x 24"H / 130lbs (mm) 410W x 876.3 L x 584H / 59kg
<b>Standard Marking Field</b>	163 Focal Lens 3.93" x 3.93" / 100mm x 100mm
<b>Standard Max Part Size</b>	12"W x 9.0"L x 5.66"H (mm) 254W x 228L x 142H
<b>Laser Type</b>	Ytterbium Fiber
<b>Wavelength</b>	1062nm +/- 3nm
<b>Wattage</b>	20W
<b>Frequency Range</b>	1-400kHz
<b>Pulse Duration</b>	200ns
<b>Operative Ambient Air Temp</b>	0° - 40° C / 32° - 104° F
<b>Cooling</b>	Forced Air
<b>Input Power Requirements</b>	Power Sensing 110-240VAC 50/60Hz
<b>Aiming Beam</b>	(2) Class IIIa/3R Red Diode
<b>PC</b>	Windows 7 or 10 Laptop or Desktop PC
<b>PC Connection</b>	USB
<b>Machine Ports</b>	Diagnostic, Option Pendant
<b>Warranty</b>	18 Month Comprehensive, Unlimited Hours
<b>Documentation (Provided in Digital Format via USB Drive)</b>	System & Software Manuals Laser Settings Guide / Safety Manual

## QUBE

<b>System Dimensions / Weight (approx.)</b>	Rack: 13.5"W x 13.5"L x 6.56"H / 35lbs (mm) 343W x 343 L x 167H / 16kg
	Head: 4.0"W x 14.0"L x 4.5"H / 10lbs (mm) 102W x 356 L x 114H / 4.5kg
<b>Standard Marking Field</b>	163 Focal Lens 3.93" x 3.93" / 100mm x 100mm
<b>Upgrade Lens</b>	254 Focal Lens 6.5" x 6.5" / 165mm x 165mm
<b>Laser Type</b>	Ytterbium Fiber
<b>Wavelength</b>	1062nm +/- 3nm
<b>Wattage</b>	20W
<b>Frequency Range</b>	1-400kHz
<b>Pulse Duration</b>	200ns
<b>Operative Ambient Air Temp</b>	0° - 40° C / 32° - 104° F
<b>Cooling</b>	Forced Air
<b>Input Power Requirements</b>	Power Sensing 110-240VAC 50/60Hz
<b>Aiming Beam</b>	(2) Class IIIa/3R Red Diode
<b>PC</b>	Windows 7 or 10 Laptop or Desktop PC
<b>PC Connection</b>	USB
<b>Machine Ports</b>	Diagnostic, Option Pendant
<b>Warranty</b>	18 Month Comprehensive, Unlimited Hours
<b>Documentation (Provided in Digital Format via USB Drive)</b>	System & Software Manuals Laser Settings Guide / Safety Manual

## QUBE 60

<b>System Dimensions / Weight (approx.)</b>	Rack: 14.8"W x 15.17"L x 7.4"H / 35lbs (mm) 376W x 385L x 189H / 16kg
	Head: 4.0"W x 14.0"L x 4.5"H / 10lbs (mm) 102W x 356 L x 114H / 4.5kg
<b>Standard Marking Field</b>	163 Focal Lens 3.93" x 3.93" / 100mm x 100mm
<b>Upgrade Lens</b>	254 Focal Lens 6.5" x 6.5" / 165mm x 165mm
<b>Laser Type</b>	Ytterbium Fiber
<b>Wavelength</b>	1062nm +/- 3nm
<b>Wattage</b>	60W
<b>Frequency Range</b>	1-1,000kHz
<b>Pulse Duration</b>	8 Selectable, 10-350ns
<b>Operative Ambient Air Temp</b>	0° - 40° C / 32° - 104° F
<b>Cooling</b>	Forced Air
<b>Input Power Requirements</b>	Power Sensing 110-240VAC 50/60Hz
<b>Aiming Beam</b>	(2) Class IIIa/3R Red Diode
<b>PC</b>	Windows 7 or 10 Laptop or Desktop PC
<b>PC Connection</b>	USB
<b>Machine Ports</b>	Diagnostic, Option Pendant
<b>Warranty</b>	18 Month Comprehensive, Unlimited Hours
<b>Documentation (Provided in Digital Format via USB Drive)</b>	System & Software Manuals Laser Settings Guide / Safety Manual

\*Drawings available upon request. Specifications subject to change.



## TRAINING AND SUPPORT

LaserGear products are designed to setup and install with minimal effort. Every system ships fully assembled for quick startup. With our startup manuals, training videos, and more, users can easily setup and program LaserGear products on their own.

TYKMA™ ElectroX pledges to provide every customer with laser systems of the highest quality and reliability. We offer applications specialists available from the

start.

Our 24/7, 365 days a year emergency service line is staffed with factory-trained technicians for all your service needs. We're dedicated to providing long-term customer problem resolution and training to ensure your system operates effectively for years to come. Contact us today to learn more. Join the growing number of manufacturers who've chosen TYKMA™ ElectroX as their partner in industrial laser

systems.

- 24/7, 365 days a year emergency support phone line
- Online remote programming and troubleshooting assistance via Citrix™ secured software
- Application and programming assistance
- Video training tutorials
- LaserGear warranty system replacement



# LASERGEAR

BY TYKMA ELECTROX

370 GATEWAY DR, CHILLICOTHE, OH 45601

+1 740 779-9918

[WWW.LASERGEAR.COM](http://WWW.LASERGEAR.COM)

[INFO@LASERGEAR.COM](mailto:INFO@LASERGEAR.COM)